



The Rivers C. of E. Academy Trust

Newsletter

Issue 02

2024–2025



The Rivers
C.of E. Academy Trust



Our mission

Extraordinary Education
Extraordinary People
Extraordinary Futures

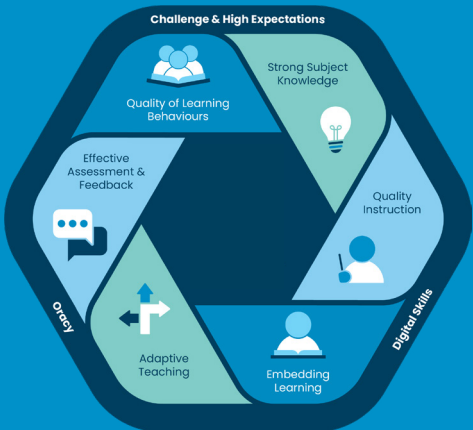
Here's what that looked like in 2024–2025.

Extraordinary Education

Excellent teaching and provision

Our curriculum is ambitious, inclusive and prepares children to make a positive impact on the world.

We launched our teaching and learning strategy working closely with leaders and staff to develop principles for effective teaching and learning.

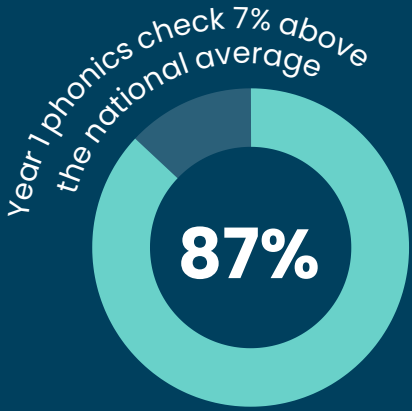
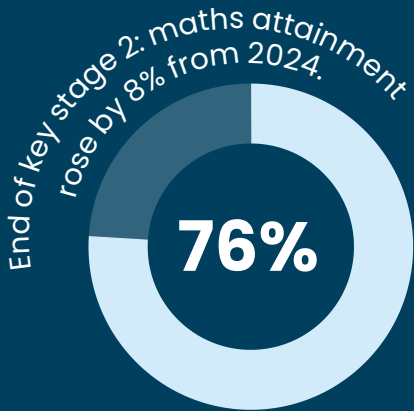


Ofsted: All Rivers' schools are rated 'good' or 'outstanding' by Ofsted. During this academic year, our trust had four successful Ofsted inspections, which confirmed the impact of our trust's curriculum, school improvement approach and the great work staff do on the frontline.

St Clement's CofE Primary School was judged to be 'good' with 'outstanding' for personal development and St Peter's CofE Primary, Cranham Primary School and Jubilee Park Academy retained their 'good' judgments.

Pupil outcomes

Pupils across our trust continue to achieve well. Our assessment averages for early years, year 1 phonics check, year 4 multiplication checks and key stage 2 SATS are at or above national average.



High-quality support for vulnerable pupils

Focus on inclusion and progress: At the heart of our teaching & learning strategy is ambition and inclusivity for vulnerable pupils including those who have Special Educational Needs and Disabilities (SEND).

- To face the national challenges, we are trying new research-based ways of supporting pupils with SEND. What this means for our pupils:
 - More personalised support
 - Specialist staff where they are needed most
- Sally Phillpotts' appointment as Director of Inclusion marks a strategic move to prioritise inclusion.



Sally Phillpotts
Director of inclusion



My Extraordinary Experiences gives every pupil the chance to enjoy 20 enrichment experiences before finishing a Rivers school. These experiences help children grow in curiosity and confidence. A handy app lets pupils track each achievement, so they can celebrate their journey.

MEE Overview



Art Project



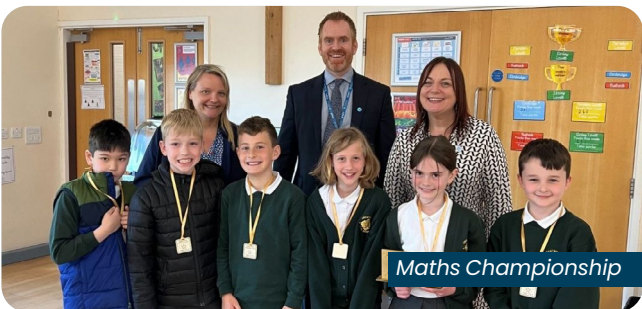
Art Project



Boxcar Rally



Dance Festival



Maths Championship

Exceptional enrichment

Along with MEE, a wealth of new pupil collaboration events has been created by our professional development staff working party, to lift provision for enrichment across our trust. Thousands of pupils took part in our trust-wide art project, dance festival and maths championship.

Art Project: A trust-wide art project 'Making the ordinary extraordinary' in partnership with Worcestershire Wildlife Trust saw pupils learn new art techniques, become peer leaders and produce artwork for their school. Peer leaders created an art installation which was on display in The Hive Library, Worcester.

Boxcar Rally: Over 600 Year 6 pupils participated in our 'award-winning' third annual Box Car Rally.

Boxcar Rally

Dance Festival: Over 500 pupils from Reception through to Year 6 choreographed and performed at local theatres.

Maths Championship: Teams of pupils from each school competed to become Rivers Maths champions.

Latest News

Extraordinary People

Empowered and valued employees

‘10 for 10’ (10 new staff benefits to celebrate 10 years of existence as an employer) initiative for staff is in full swing. Enhanced professional development was an appreciated benefit that was notable in a very positive staff survey in 2025.

Staff survey results:

98%

Are positive about coming to work

91%

Feel recognised and valued

97%

Would recommend the trust (or their school)

Clear professional learning pathways

Investing in our teachers

We are committed to giving your child the best education by supporting the people who teach them. Our new professional development programme is already improving classroom teaching, with early signs of success in key stage 2 results. Through The Rivers Teaching Alliance, staff receive high-quality training so every child is taught by confident, skilled and well-prepared professionals.

- ✓ **108** staff trained on National Professional Qualifications (NPQs)
- ✓ **53** apprentices gained hands-on experience
- ✓ **6** teachers from the teacher training cohort successfully appointed to positions in our schools
- ✓ **250+** staff trained in essential areas like First Aid, Mental Health, Safer Recruitment, Fire Safety and Positive Handling

High-quality collaboration and networks

Regular and meaningful staff collaboration events and networks continue to be a strength of our trust.

Spotlight:

- **Regular SLT strategy days** – where senior leaders come together to make education better for all pupils.
- **Wilder Schools Project:** Five primary schools within the trust are leading the way in outdoor learning thanks to an inspiring partnership with Worcestershire Wildlife Trust. Each school has a dedicated team of staff who have received hands-on training in outdoor education techniques. These educators are now cascading their knowledge to colleagues and embedding outdoor learning into their curriculum planning.
- **Music teacher development:** Eight of our schools took part in a vibrant music teacher development project, funded by the Paul Hamlyn Foundation and delivered with Severn Arts, aimed at boosting classroom creativity and confidence. Teachers and pupils collaborated with three professional musicians to explore new forms of musical expression, body percussion, rap and spoken word.
- **Teachers learning together:** Our teachers are working in Teacher Research Groups (TRGs) to share ideas and improve classroom practice. This approach, inspired by a successful Japanese model, helps ensure lessons are inclusive and meet the needs of every child.



Extraordinary Futures

Purposeful environments

We have made significant investments to ensure school environments are sustainable, accessible and inclusive for all pupils.

Improvements include:



Dudley Wood: A bright, welcoming nursery with modern facilities, refreshed spaces and a redesigned reception area to create the best start for early years pupils.



Cutnall Green and St Peter's: Upgraded boiler systems

Summerhill, Jubilee, and Dudley Wood: Included in a heat decarbonisation plan to improve energy efficiency—creating vibrant, safe and future-ready learning spaces for every child.



Dudley Wood



Northwick and St Clement's: Fresh interior decoration

Digital innovation and efficiency

- Continued investment in Evergreen and digital tools is enhancing learning.

Evergreen Enhanced Learning

- AI-assisted systems and improved cyber security are now in place to improve operational compliance and efficiency.

Thriving growth and partnerships

Our trust is in a secure financial position, which means we can keep investing in the best resources and facilities for your child's education. We also work closely with local authorities and other schools to share expertise and improve outcomes.

DfE selects our trust as regional leader in education excellence

Our trust has been chosen by the Department for Education (DfE) as a leading organisation in the regional improvement for standards and excellence (RISE) programme to help shape national education improvements.

Coming in 2028

This year, the trust was successful in its bid to build and open a new free school in Foxlydiate, on the outskirts of Redditch.

Foxlydiate First and Nursery School

Future Plans

The trust is building on the success of its first ten years. As we enter the second year of our 2030 strategy, our focus areas are:

- 01** High-quality teaching & learning including enriching experiences for pupils
- 02** Inclusion strategy: Building on the support for vulnerable pupils
- 03** Tailored and enhanced staff development
- 04** Further development of our trust professional services
- 05** Growth & partnerships: including new schools, early years provision and wraparound care.



The Rivers C. of E. Academy Trust
School Lane, Cutnall Green
Droitwich
WR9 0PH

Telephone: 01299 851178

Email: info@riverscofe.co.uk